

STABILIZED CO₂ LASER

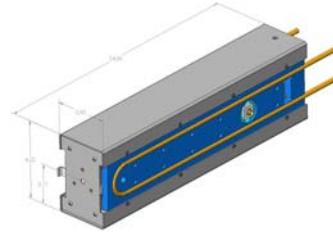
Model MERIT-S

SPECIFICATIONS

Power: 8 watts

Wavelength range: 10.5 μm to 10.7 μm , tuned by temperature.

Power stability: $\pm 2\%$



Laser mode: Near TEM₀₀, $M^2 < 1.2$; beam diameter at exit: 2.4 mm; beam divergence angle: 5.5 mrad

Size: 14" x 4" x 3" (please consult the factory for water cool and forced air cooled options)

Cooling requirement: forced air (picture shows an optional water cooled version)

Power source: 28 VDC at 7 amps.

Factory warranty: One year for parts and labor due to manufacturing quality

Options:

- Single wavelength (factory preset)
- Wavelength tunable
- Water cooling
- Forced air cooling
- Real time power monitor
- Super pulse: 25 watt peak power, 6 watt average.

* We strive to satisfy customer requirements. Please contact us if you have other special needs.

* Specifications subject to change without notice.

For more information, visit us at
www.accesslaserco.com

